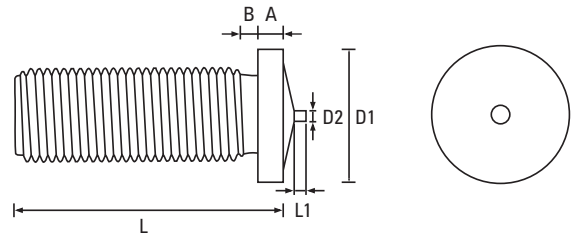



CD Weld Studs

Fasteners for Sheet Metal Applications

Threaded Type PT DIN EN ISO 13918

Aluminium



Thread	M3	M4	M5	M6	M8	Thread
D1 ±0.2	4.5	5.5	6.5	7.5	9.0	D1 ±0.2
A	0.7 - 1.4	0.7 - 1.4	0.8 - 1.4	0.8 - 1.4	0.8 - 1.4	A
B max	1.5	1.5	2.0	2.0	3.0	B max
D2 ±0.8	0.60	0.65	0.75	0.75	0.75	D2 ±0.8
L1 ±0.5	0.55	0.55	0.80	0.80	0.85	L1 ±0.5
L - Length mm	 <p>Scan the QR Code to view technical drawings for this product range https://www.lancasterfastener.com/drawings-cdwsptal</p>					L - Length mm
6	●	●				6
8	●	●	●			8
10	●	●	●	●		10
12	●	●	●	●		12
15	●	●	●	●		15
16		●	●	●		16
20	●	●	●	●		20
25	●	●	●	●		25
30	●	●	●	●		30
35		●	●	●		35
40						40
45						45
50						50
55						55
60						60

● Aluminium - preferred and available from stock.

PRODUCT CODE EXAMPLE
CDWSPT60025AL

PRODUCT DESCRIPTION EXAMPLE
M6 x 25 DIN EN ISO 13918 Threaded Type PT CD Weld Stud Aluminium Alloy