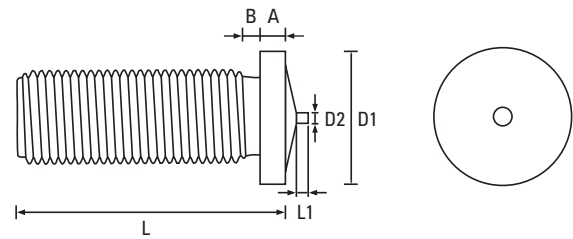



Threaded Type PT DIN EN ISO 13918

A2 Stainless Steel



Thread	M3	M4	M5	M6	M8	M10	Thread
D1 ±0.2	4.5	5.5	6.5	7.5	9.0	10.5	D1 ±0.2
A	0.7 - 1.4	0.7 - 1.4	0.8 - 1.4	0.8 - 1.4	0.8 - 1.4	0.7 - 1.4	A
B max	1.5	1.5	2.0	2.0	3.0	3.0	B max
D2 ±0.8	0.60	0.65	0.75	0.75	0.75	0.75	D2 ±0.8
L1 ±0.5	0.55	0.55	0.80	0.80	0.85	0.75	L1 ±0.5
L - Length mm	 <p>Scan the QR Code to view technical drawings for this product range https://www.lancasterfastener.com/drawings-for-cdwspta2</p>						L - Length mm
6	●	●					6
8	●	●	●	●			8
10	●	●	●	●	●		10
12	●	●	●	●	●		12
15	●	●	●	●	●		15
16	●	●	●	●	●		16
20	●	●	●	●	●	●	20
25	●	●	●	●	●	●	25
30	●	●	●	●	●		30
35		●	●	●	●		35
40		●	●	●	●		40
45			●	●			45
50			●	●	●		50
55							55
60							60

● A2 Stainless Steel - preferred and available from stock.

PRODUCT CODE EXAMPLE
CDWSPT30020A2

PRODUCT DESCRIPTION EXAMPLE
M3 x 20 DIN EN ISO 13918 Threaded Type PT CD Weld Stud A2 Stainless Steel

Screws for Plastics
ISO & DIN 7500 Tap-Fix® Screws
Machine Screws
Self-Tapping Screws
Self-Drilling Screws
Micro Diameter Screws
Hammer Drive Screws
K-Series® Setzmuttern
Rivet Bushes
Self-Dinching Fasteners
CD Weld Studs
Brass Inserts for Plastics