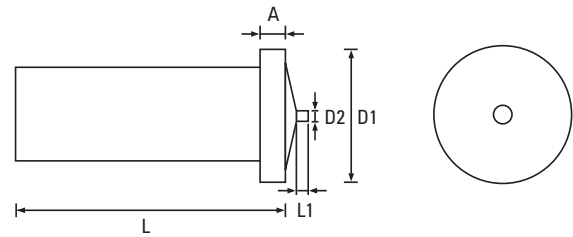
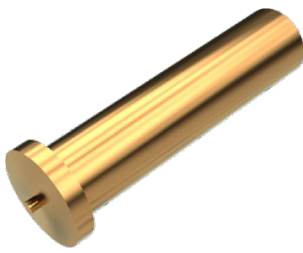



Unthreaded Type UT DIN EN ISO 13918

Copper Coated



| Dia. | 3 | 4 | 5 | 6 | 7.1 | Dia. |
|---------------|---|-----------|-----------|-----------|-----------|---------------|
| D1 ±0.2 | 4.5 | 5.5 | 6.5 | 7.5 | 9.0 | D1 ±0.2 |
| A | 0.7 - 1.4 | 0.7 - 1.4 | 0.8 - 1.4 | 0.8 - 1.4 | 0.8 - 1.4 | A |
| D2 ±0.8 | 0.60 | 0.65 | 0.75 | 0.75 | 0.75 | D2 ±0.8 |
| L1 ±0.5 | 0.55 | 0.55 | 0.80 | 0.80 | 0.85 | L1 ±0.5 |
| L - Length mm |  <p>Scan the QR Code to view technical drawings for this product range https://www.lancasterfastener.com/drawings-cdwsutcu</p> | | | | | L - Length mm |
| 6 | | | | | | 6 |
| 8 | | | ● | | | 8 |
| 10 | | ● | ● | | | 10 |
| 12 | | ● | ● | | | 12 |
| 15 | | ● | ● | ● | | 15 |
| 16 | | | | | | 16 |
| 20 | | ● | | | | 20 |
| 25 | | | ● | ● | | 25 |
| 30 | | | | ● | | 30 |
| 35 | | | | | | 35 |
| 40 | | | | | | 40 |
| 45 | | | | | | 45 |
| 50 | | | | | | 50 |
| 55 | | | | | | 55 |
| 60 | | | | | | 60 |

● Copper Coated - preferred and available from stock.

PRODUCT CODE EXAMPLE
CDWSUT60025CU

PRODUCT DESCRIPTION EXAMPLE
6 x 25 DIN EN ISO 13918 Unthreaded Type UT CD Weld Stud Copper Coated

Screws for Plastics
ISO & DIN 7500 Tap-Fix® Screws
Machine Screws
Self-Tapping Screws
Self-Drilling Screws
Micro Diameter Screws
Hammer Drive Screws
K-Series® Setzmuttern
Rivet Bushes
Self-Clinching Fasteners
CD Weld Studs
Brass Inserts for Plastics