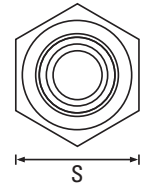
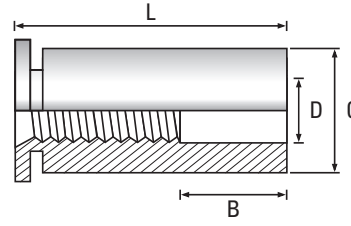


# Self-Clinching Fasteners

Fasteners for Sheet Metal Applications

Through Stand Offs

A1 Stainless Steel



Thread	M2.5	M3	M3 Alt	M4	M5	Thread
C +0.00 -0.13	4.18	4.18	5.39	7.10	7.10	C +0.00 -0.13
D	3.2	3.2	3.2	4.8	5.2	D
S Width A/F Nom	4.8	4.8	6.4	7.9	7.9	S Width A/F Nom
Hole Size +0.08 -0.00	4.2	4.2	5.4	7.2	7.2	Hole Size +0.08 -0.00
Min. distance to sheet edge	6.0	6.0	6.8	8.0	8.0	Min. distance to sheet edge
Min. Rec. sheet thickness	1.0	1.0	1.0	1.3	1.3	Min. Rec. sheet thickness



Scan the QR Code to view technical drawings for this product range  
<https://www.lancasterfastener.com/drawings-for-hcsoa2>

B Dimension (nom)	Scan the QR Code to view technical drawings for this product range <a href="https://www.lancasterfastener.com/drawings-for-hcsoa2">https://www.lancasterfastener.com/drawings-for-hcsoa2</a>				LENGTH ±0.2
N/A	●	●			3
	●				4
					5
4	●	●			6
	●	●	●		8
	●	●	●		10
8	●	●	●		12
	●				14
	●	●			16
11				●	18
					20
					22
					25

● A1 Stainless Steel - preferred and available from stock.

PRODUCT CODE EXAMPLE  
HCSO03012A2

PRODUCT DESCRIPTION EXAMPLE  
M3 x 12 Clinch Through Stand Off A1 Stainless Steel