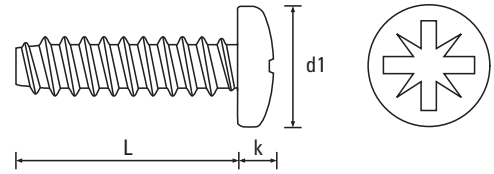
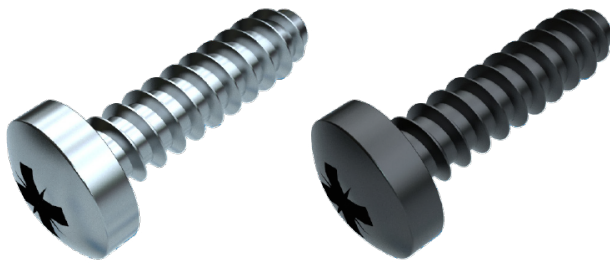


Self-Tapping Screws

Screws for Sheet Metal Applications

Cross Recess (Z) Pan DIN 7981 Type F

Steel / Zinc Plated (CR3) & Steel / Black (CR3)



Dia. mm	2.2	2.9	3.5	3.9	4.2	4.8	5.5	6.3	Dia. mm
Dia. Gauge	2	4	6	7	8	10	12	14	Dia. Gauge
d1 - max	4.20	5.60	6.90	7.50	8.20	9.50	10.80	12.50	d1 - max
k - max	1.80	2.20	2.60	2.80	3.05	3.55	3.95	4.55	k - max
s - A/F	-	-	-	-	-	-	-	-	s - A/F
Recess	1	1	2	2	2	2	3	3	Recess



Scan the QR Code to view technical drawings for this product range
<https://www.lancasterfastener.com/drawings-for-ltbzpanzc>

L - Length mm									L - Length ins
3.0	●								1/8
4.5	●	●	●						3/16
6.5	●	●	● ●	●	● ●	●			1/4
8	●	●	●		●	●			5/16
9.5	●	●	● ●	●	● ●	●			3/8
13	●	●	● ●	●	● ●	●	●	●	1/2
16		●	● ●	●	● ●	●	●		5/8
19		●	●		●	●	●		3/4
22			●			●			7/8
25		●	●		●	●	●		1
32		●	●		●	●			1 1/4
38									1 1/2
45									1 3/4
50									2
57									2 1/4
63									2 1/2
70									2 3/4

● Steel / Zinc Plated (CR3) - preferred and available from stock. ● Steel / Black (CR3) - preferred and available from stock.

PRODUCT CODE EXAMPLE

LTBZPAN22095ZC
 LTBZPAN42065ZC

PRODUCT DESCRIPTION EXAMPLE

2.2 x 9.5 Cross Recess (Z) Pan Din 7981 Type F Self-Tapping Screw Steel / Zinc Plated (CR3)
 4.2 x 6.5 Cross Recess (Z) Pan Din 7981 Type F Self-Tapping Screw Steel / Black (CR3)