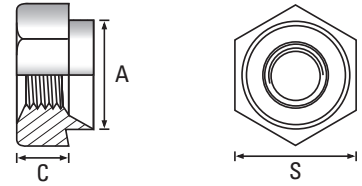
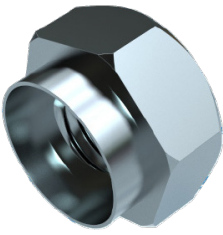


Hexagon

Steel / Zinc Plated (CR3)



Thread	M2.5	M3	M3.5	M4	M5	M6	M8	M10	M12	Thread
A Dia. of spigot +0.00 -0.13	5.54	5.54	6.73	6.73	7.92	9.52	12.70	15.87	19.05	A Dia. of spigot +0.00 -0.13
S Width A/F ±0.15	7.92	7.92	7.92	7.92	9.52	11.10	14.27	19.05	22.22	S Width A/F ±0.15
C Depth of body ±0.13	3.17	3.17	3.17	3.17	3.81	5.08	6.35	7.62	10.16	C Depth of body ±0.13
Recom. Hole Size +0.05 -0.00	5.54	5.54	6.73	6.73	7.92	9.52	12.70	15.87	19.05	Recom. Hole Size +0.05 -0.00



Scan the QR Code to view technical drawings for this product range
<https://www.lancasterfastener.com/drawings-hchrbstzc>

GAUGE										GAUGE
10 swg				●	●	●	●	●	●	10 swg
12 swg					●	●	●	●		12 swg
14 swg		●		●	●	●	●	●	●	14 swg
16 swg				●	●	●	●	●	●	16 swg
18 swg		●		●	●	●	●			18 swg
20 swg				●	●	●	●	●		20 swg
-										-
-										-
-										-
-										-

● Steel / Zinc Plated (CR3) - preferred and available from stock.

PRODUCT CODE EXAMPLE
HCHR03014STZC

PRODUCT DESCRIPTION EXAMPLE
M3 x 14 swg Hexagon Rivet Bush Steel / Zinc Plated (CR3)