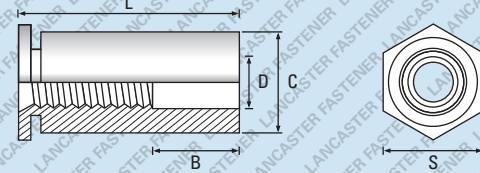
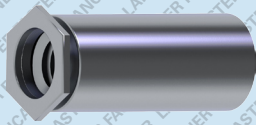




Steel / Zinc Plated (CR3)

RoHS 2 Compliant

Self-Clinching Fasteners



Also available in A1 Stainless Steel - See page 212

Further technical data is available on page 260

Thread	M2.5	M3	M3 ALT	M4	M5	Thread
C +0.00 -0.13	4.18	4.18	5.39	7.10	7.10	C +0.00 -0.13
D	3.2	3.2	3.2	4.8	5.2	D
S Width A/F Nom	4.8	4.8	6.4	7.9	7.9	S Width A/F Nom
Hole Size +0.08 -0.00	4.2	4.2	5.4	7.2	7.2	Hole Size +0.08 -0.00
Min. distance to sheet edge	6	6	6.8	8	8	Min. distance to sheet edge
Min. Rec. sheet thickness	1.0	1.0	1.0	1.3	1.3	Min. Rec. sheet thickness
B Dimension (nom)	Bulk Carton Quantity Small Box Quantity Weight (KG) per 1,000				LENGTH ±0.2	
N/A	40,000 1,000 0.17		20,000 1,000 0.62		3	
	30,000 1,000 0.23		20,000 1,000 0.68		4	
	40,000 1,000 0.35*		25,000 1,000 0.63		5	
	40,000 1,000 0.43*		15,000 1,000 0.76		6	
	30,000 1,000 0.85		15,000 1,000 1.00		8	
4	20,000 1,000 0.96		10,000 1,000 1.20		10	
	20,000 1,000 1.00		10,000 1,000 1.44		12	
	15,000 1,000 1.10		8,000 1,000 1.69		14	
8	8,000 1,000 1.90		5,000 1,000 2.60		16	
			5,000 500 3.01		18	
			3,000 500 3.81		20	
11			3,000 500 4.18		22	
			2,000 500 4.55		25	

Zinc Plated (CR3) - preferred and available from stock.

PRODUCT CODE EXAMPLE

HCS004006STZC

PRODUCT DESCRIPTION EXAMPLE

M4 x 6 Clinch Through Stand Off Steel / Zinc Plated (CR3)

*Non preferred size and may be subject to minimum manufacturing quantities.
E. & O. E.

© 2021, Lancaster Fastener Co Ltd. All images are copyright protected.

Note: When ordering M3 Alternative, please ensure your order clearly states "M3 Alt".