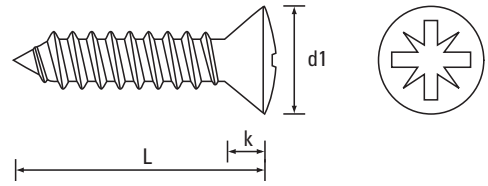
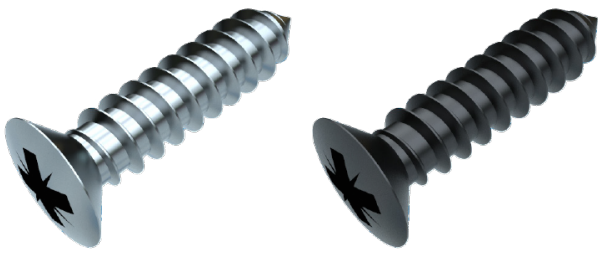


# Self-Tapping Screws


Screws for Sheet Metal Applications

Cross Recess (Z) Raised Countersunk DIN 7983 Type C

Steel / Zinc Plated (CR3) & Steel / Black (CR3)



| Dia. mm    | 2.2  | 2.9  | 3.5  | 3.9  | 4.2  | 4.8  | 5.5   | 6.3   | Dia. mm    |
|------------|------|------|------|------|------|------|-------|-------|------------|
| Dia. Gauge | 2    | 4    | 6    | 7    | 8    | 10   | 12    | 14    | Dia. Gauge |
| d1 - max   | 4.30 | 5.50 | 6.80 | 7.50 | 8.10 | 9.50 | 10.80 | 12.40 | d1 - max   |
| k - ref    | 1.30 | 1.70 | 2.10 | 2.30 | 2.50 | 3.00 | 3.40  | 3.80  | k - ref    |
| s - A/F    | -    | -    | -    | -    | -    | -    | -     | -     | s - A/F    |
| Recess     | 1    | 1    | 2    | 2    | 2    | 2    | 3     | 3     | Recess     |

| L - Length mm |  <p>Scan the QR Code to view technical drawings for this product range<br/> <a href="https://www.lancasterfastener.com/drawings-for-ltabzrsdzc">https://www.lancasterfastener.com/drawings-for-ltabzrsdzc</a></p> |   |     |   |     |     |   |  |  | L - Length ins |
|---------------|---|---|-----|---|-----|-----|---|--|--|----------------|
| 4.5           |   |   |     |   |     |     |   |  |  | 3/16           |
| 6.5           |   |   |     |   |     |     |   |  |  | 1/4            |
| 8             |   |   |     |   |     |     |   |  |  | 5/16           |
| 9.5           |   | ● | ●   |   |     |     |   |  |  | 3/8            |
| 13            |   | ● | ● ● | ● | ● ● | ●   |   |  |  | 1/2            |
| 16            |   | ● | ● ● | ● | ● ● | ●   |   |  |  | 5/8            |
| 19            |   | ● | ● ● | ● | ● ● | ●   | ● |  |  | 3/4            |
| 22            |   |   | ●   | ● | ●   |     |   |  |  | 7/8            |
| 25            |   | ● | ● ● | ● | ● ● | ● ● |   |  |  | 1              |
| 32            |   |   | ● ● | ● | ●   | ● ● | ● |  |  | 1 1/4          |
| 38            |   |   | ●   |   | ●   | ●   | ● |  |  | 1 1/2          |
| 45            |   |   |     |   | ● ● | ●   |   |  |  | 1 3/4          |
| 50            |   |   |     |   | ●   | ●   | ● |  |  | 2              |
| 57            |   |   |     |   |     |     |   |  |  | 2 1/4          |
| 63            |   |   |     |   |     |     |   |  |  | 2 1/2          |
| 70            |   |   |     |   |     |     |   |  |  | 2 3/4          |
| 75            |   |   |     |   |     |     |   |  |  | 3              |

● Steel / Zinc Plated (CR3) - preferred and available from stock.

● Steel / Black (CR3) - preferred and available from stock.

**PRODUCT CODE EXAMPLE**

LTABZRS55190ZC  
 LTABZRS35320ZN

**PRODUCT DESCRIPTION EXAMPLE**

5.5 x 19.0 Cross Recess (Z) Raised Countersunk DIN 7983 Type C Self-Tapping Screw Steel / Zinc Plated (CR3)  
 3.5 x 32.0 Cross Recess (Z) Raised Countersunk DIN 7983 Type C Self-Tapping Screw Steel / Black (CR3)

Screws for Plastics  
 ISO & DIN 7500 Tap-Fix® Screws  
 Machine Screws  
 Self-Tapping Screws  
 Self-Drilling Screws  
 Micro Diameter Screws  
 Hammer Drive Screws  
 K-Series® Setzmuttern  
 Rivet Bushes  
 Self-Clinching Fasteners  
 CD Weld Studs  
 Brass Inserts for Plastics