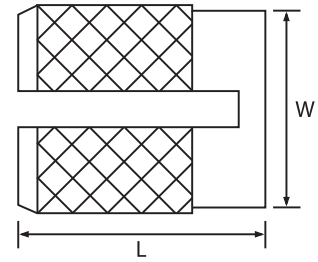
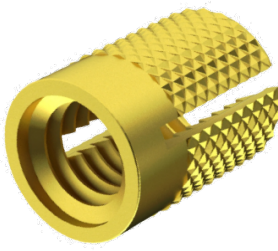



Expansion-Fix Unheaded

Brass Self Colour



| Thread                          | M2   | M2.5 | M3  | M3.5 | M4  | M5  | M6  | M8  | M10 | Thread                          |
|---------------------------------|--|------|-----|------|-----|-----|-----|-----|-----|---------------------------------|
| W max mm                        | 3.2  | 4.0  | 4.0 | 4.7  | 5.5 | 6.3 | 7.9 | 9.5 | -   | W max mm                        |
| -                               | -  | -    | -   | -    | -   | -   | -   | -   | -   | -                               |
| Rec. Hole Size (mm) (-0.0/+0.1) | 3.2  | 4.0  | 4.0 | 4.8  | 5.6 | 6.4 | 8.0 | 9.6 | -   | Rec. Hole Size (mm) (-0.0/+0.1) |
| Min. Wall Thickness (mm)        | 2.4  | 3.2  | 3.2 | 3.6  | 4.0 | 4.8 | 6.0 | 7.0 | -   | Min. Wall Thickness (mm)        |
| L - Length mm                   |  <p>Scan the QR Code to view technical drawings for this product range<br/> <a href="https://www.lancasterfastener.com/drawings-for-ipmuhdexpfibrsc">https://www.lancasterfastener.com/drawings-for-ipmuhdexpfibrsc</a> </p> |      |     |      |     |     |     |     |     | L - Length mm                   |
| 3.9                             |  |      |     |      |     |     |     |     |     | 3.9                             |
| 4.7                             |  |      | ●   |      |     |     |     |     |     | 4.7                             |
| 6.3                             |  |      |     | ●    |     |     |     |     |     | 6.3                             |
| 7.9                             |  |      |     |      | ●   |     |     |     |     | 7.9                             |
| 9.4                             |  |      |     |      |     | ●   |     |     |     | 9.4                             |
| 12.6                            |  |      |     |      |     |     | ●   |     |     | 12.6                            |
| -                               |  |      |     |      |     |     |     |     |     | -                               |
| -                               |  |      |     |      |     |     |     |     |     | -                               |
| -                               |  |      |     |      |     |     |     |     |     | -                               |
| -                               |  |      |     |      |     |     |     |     |     | -                               |
| -                               |  |      |     |      |     |     |     |     |     | -                               |

● Brass Self Colour - preferred and available from stock.

PRODUCT CODE EXAMPLE  
IPMUHDEXPFIX035BRSC

PRODUCT DESCRIPTION EXAMPLE  
M3.5 Unheaded Expansion-Fix Brass Inserts for Plastics Self Colour