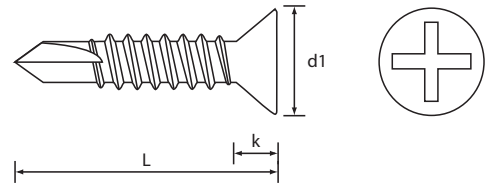
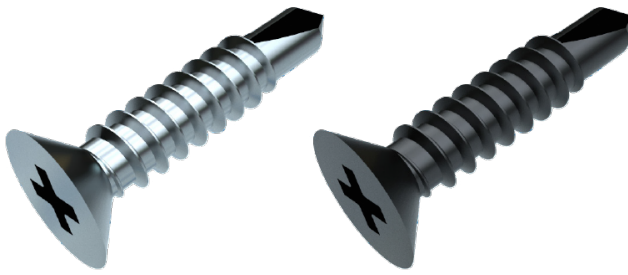


Self-Drilling Screws

Screws for Sheet Metal Applications

Cross Recess (H) Countersunk DIN 7504 FORM P

Steel / Zinc Plated (CR3) & Steel / Black (CR3)



Dia. mm	2.2	2.9	3.5	3.9	4.2	4.8	5.5	6.3	Dia. mm
Dia. Gauge	2	4	6	7	8	10	12	14	Dia. Gauge
d1 - max	-	5.50	6.80	7.50	8.10	9.50	10.80	12.40	d1 - max
k - ref	-	1.70	2.10	2.30	2.50	3.00	3.40	3.80	k - ref
s - A/F	-	-	-	-	-	-	-	-	s - A/F
Recess	-	1	2	2	2	2	3	3	Recess



Scan the QR Code to view technical drawings for this product range
<https://www.lancasterfastener.com/drawings-for-dfdphcskzc>

L - Length mm	Scan the QR Code to view technical drawings for this product range https://www.lancasterfastener.com/drawings-for-dfdphcskzc									L - Length ins
6.5										1/4
9.5		●	●							3/8
13		●	●	●	●	●				1/2
16		●	●	●	●●	●				5/8
19			●	●	●	●	●	●		3/4
22			●	●	●	●		●		7/8
25			●	●	●●	●	●	●		1
32			●	●	●●	●●	●	●		1 1/4
38			●	●	●●	●●	●	●		1 1/2
45				●	●	●	●	●		1 3/4
50					●	●	●	●		2
60						●	●	●		2 1/2
70							●	●		2 3/4
75										3
80								●		3 1/4
90										3 1/2
100										4



Steel / Zinc Plated (CR3) - preferred and available from stock.



Steel / Black (CR3) - preferred and available from stock.

PRODUCT CODE EXAMPLE

DFDPHCSK29160ZC
DFDPHCSK48380ZN

PRODUCT DESCRIPTION EXAMPLE

2.9 x 16.0 Cross Recess (H) Countersunk DIN 7504 FORM P Self-Drilling Screw Steel / Zinc Plated (CR3)
4.8 x 38.0 Cross Recess (H) Countersunk DIN 7504 FORM P Self-Drilling Screw Steel / Black (CR3)