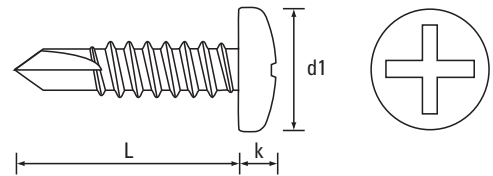
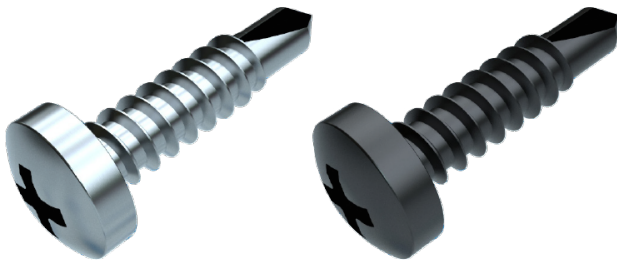


Self-Drilling Screws

Screws for Sheet Metal Applications

Cross Recess (H) Pan DIN 7504 FORM N

Steel / Zinc Plated (CR3) & Steel / Black (CR3)



Dia. mm	2.2	2.9	3.5	3.9	4.2	4.8	5.5	6.3	Dia. mm
Dia. Gauge	2	4	6	7	8	10	12	14	Dia. Gauge
d1 - max	-	5.60	6.90	7.50	8.20	9.50	10.80	12.50	d1 - max
k - max	-	2.20	2.60	2.80	3.05	3.55	3.95	4.55	k - max
s - A/F	-	-	-	-	-	-	-	-	s - A/F
Recess	-	1	2	2	2	2	3	3	Recess



Scan the QR Code to view technical drawings for this product range
<https://www.lancasterfastener.com/drawings-for-dfdphpanzc>

L - Length mm									L - Length ins
6.5									1/4
9.5		●	● ●	● ●					3/8
13		●	●	● ●	● ●	●	●		1/2
16		●	●	● ●	● ●	●	●		5/8
19		●	●	●	● ●	● ●	●	●	3/4
22			●	●	●	●	●	●	7/8
25			●	●	● ●	● ●	●	●	1
32			● ●	●	●	●	●	●	1 1/4
38			●	●	● ●	●	●	●	1 1/2
45					●	●	●	●	1 3/4
50					●	●	●	●	2
60									2 1/2
70						●			2 3/4
75									3
80									3 1/4
90									3 1/2
100									4



Steel / Zinc Plated (CR3) - preferred and available from stock.



Steel / Black (CR3) - preferred and available from stock.

PRODUCT CODE EXAMPLE

DFDHPAN42190ZC
 DFDHPAN48250ZN

PRODUCT DESCRIPTION EXAMPLE

4.2 x 19.0 Cross Recess (H) Pan DIN 7504 FORM N Self-Drilling Screw Steel / Zinc Plated (CR3)
 4.8 x 25.0 Cross Recess (H) Pan DIN 7504 FORM N Self-Drilling Screw Steel / Black (CR3)

Screws for Plastics
 ISO & DIN 7500 Tap-Fix® Screws
 Machine Screws
 Self-Tapping Screws
 Self-Drilling Screws
 Micro Diameter Screws
 Hammer Drive Screws
 K-Series® Setzmuttern
 Rivet Bushes
 Self-Clinching Fasteners
 CD Weld Studs
 Brass Inserts for Plastics