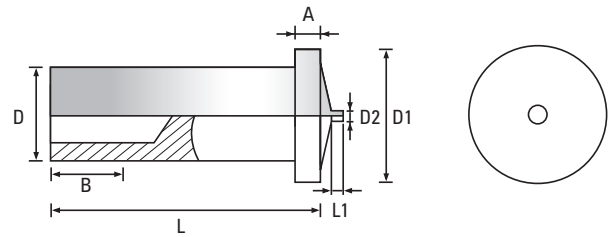
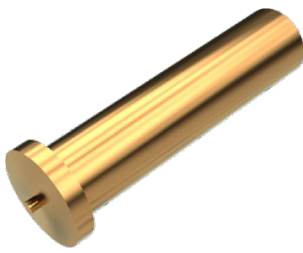


Internally Threaded Type IT DIN EN ISO 13918

Copper Coated



Thread	M3	M4	M5	-	-	Thread
D ±0.1	5	6	7.1	-	-	D ±0.1
D1 ±0.2	6.5	7.5	9	-	-	D1 ±0.2
A	0.8 - 1.4	0.8 - 1.4	0.8 - 1.4	-	-	A
B +0.5 -0	5	6	7.5	-	-	B +0.5 -0
D2 ±0.8	0.75	0.75	0.75	-	-	D2 ±0.8
L1 ±0.5	0.80	0.80	0.85	-	-	L1 ±0.5



Scan the QR Code to view technical drawings for this product range  
<https://www.lancasterfastener.com/drawings-cdwsitcu>

L - Length mm						L - Length mm
6	●					6
8	●	●				8
10	●	●	●			10
12	●	●	●			12
15	●	●	●			15
16						16
20	●	●	●			20
25		●	●			25
30						30
35						35
40						40
45						45
50						50
55						55
60						60

● Copper Coated - preferred and available from stock.

PRODUCT CODE EXAMPLE  
 CDWSIT30020CU

PRODUCT DESCRIPTION EXAMPLE  
 M3 x 20 DIN EN ISO 13918 Internally Threaded Type IT CD Weld Stud Copper Coated