

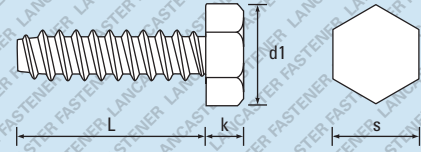
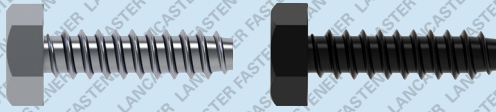


Self-Tapping Screws

Hexagon

Steel / Zinc Plated (CR3) & Steel / Black (CR3)

RoHS 2 Compliant



Further technical data is available on pages 234 - 236

TYPE F blunt

Dia. mm	2.2	2.9	3.5	3.9	4.2	4.8	5.5	6.3	Dia. mm
Dia. Gauge	2	4	6	7	8	10	12	14	Dia. Gauge
d1 - max	-	-	-	-	-	-	-	-	d1 - max
k - nom	1.30	1.50	2.30	2.30	2.80	3.00	4.00	4.80	k - nom
s - A/F max	3.20	5.00	5.50	7.00	7.00	8.00	8.00	10.00	s - A/F max
Recess	-	-	-	-	-	-	-	-	Recess
L- Length mm	Bulk Carton Quantity Small Box Quantity Weight (KG) per 1,000								L- Length ins
4.5									3/16
6.5									1/4
8									5/16
9.5						9,000 1,000 1.87			3/8
13						6,000 1,000 2.02	7,000 1,000 2.72	4,000 500 4.25	1/2
16								4,000 500 4.77	5/8
19							4,000 1,000 3.48		3/4
22									7/8
25									1
32									1 1/4
38									1 1/2
45									1 3/4
50									2
57									2 1/4
63									2 1/2
70									2 3/4
75									3

Zinc Plated (CR3) - preferred and available from stock.
 Black (CR3) - non preferred and subject to a lead time and MOQ.

See page 267
 for further detail.

PRODUCT CODE EXAMPLE

LTBHEX63160ZC
 LTBHEX48130ZN

PRODUCT DESCRIPTION EXAMPLE

6.3 x 16.0 Hexagon Type F DIN 7976 Self-Tapping Screw Steel / Zinc Plated (CR3)
 4.8 x 13.0 Hexagon Type F DIN 7976 Self-Tapping Screw Steel / Black (CR3)