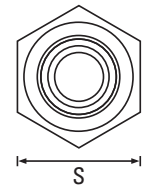
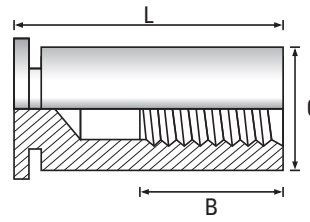


Blind Stand Offs

A1 Stainless Steel



Thread	M3	M3 Alt	M4	M5	Thread
C +0.00 -0.13	4.18	5.39	7.10	7.10	C +0.00 -0.13
S Width A/F Nom	4.8	6.4	7.9	7.9	S Width A/F Nom
Hole Size +0.08 -0.00	4.2	5.4	7.2	7.2	Hole Size +0.08 -0.00
Min. distance to sheet edge	6.0	6.8	8.0	8.0	Min. distance to sheet edge
Min. Rec. sheet thickness	1.0	1.0	1.3	1.3	Min. Rec. sheet thickness



Scan the QR Code to view technical drawings for this product range
<https://www.lancasterfastener.com/drawings-for-hcbsoa2>

B Dimension (nom)	Scan the QR Code to view technical drawings for this product range https://www.lancasterfastener.com/drawings-for-hcbsoa2				LENGTH ±0.2
N/A	●	●	●		6
4		●	●		8
		●	●		10
5	●	●	●	●	12
6.5	●		●		14
	●		●		16
9.5		●	●		18
			●		20
	●		●		22
			●		25

● A1 Stainless Steel - preferred and available from stock.

PRODUCT CODE EXAMPLE
 HCBS004020A2

PRODUCT DESCRIPTION EXAMPLE
 M4 x 20 Clinch Blind Stand Off A1 Stainless Steel