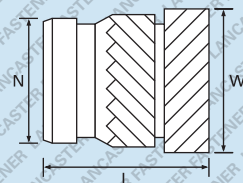
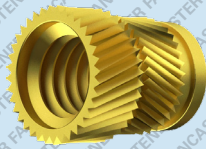


Brass Inserts for Plastics



Further technical data is available on page 263

Unheaded (UHDSONFIX)

[illegible]

Brass Self Colour - preferred and available from stock.

PRODUCT CODE EXAMPLE	PRODUCT DESCRIPTION EXAMPLE
IPMUHDSOIFIX060BRSC	M6 Unheaded Sonic-Fix Brass Inserts for Plastics Self Colour

*Non preferred. UNC & UNF thread sizes available to order. Contact our sales team to enquire for availability.
E. & O. E.
© 2021, Lancaster Fastener Co Ltd. All images are copyright protected.

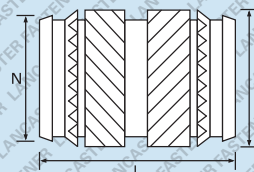


LANCASTER

TECH-FIX

Brass Inserts for Plastics

Brass
Self Colour
RoHS 2 Compliant



Further technical data is available on page 263

Unheaded (UHDTECFIX)

Thread	M2*	M2.5*	M3	M3.5	M4	M5	M6	M8*	M10*	Thread
W mm	3.5	4.4	4.4	5.2	6.1	6.8	8.5	10.0	12.3	W mm
N mm	3.1	3.9	3.9	4.7	5.5	6.3	7.9	9.5	11.8	N mm
Rec. Hole Size (mm) (-0.0/+0.1)	3.2	4.0	4.0	4.8	5.6	6.4	8.0	9.6	11.9	Rec. Hole Size (mm) (-0.0/+0.1)
Min. Wall Thickness (mm)	1.3	1.6	1.6	1.8	2.1	2.6	3.3	4.5	6.0	Min. Wall Thickness (mm)
L- Length mm	Bulk Carton Quantity Small Box Quantity Weight (KG) per 1,000									L- Length mm
4.0	N/A 1,000 0.16									4.0
5.7	N/A 1,000 0.24	25,000 1,000 0.29								5.7
7.1										7.1
8.1					10,000 1,000 0.88					8.1
9.5						10,000 1,000 1.13				9.5
12.7							2,500 1,000 2.55	N/A 500 3.80	N/A 500 4.60	12.7
-										-
-										-
-										-
-										-
-										-
-										-
-										-
-										-
-										-
-										-
-										-

Brass Self Colour - preferred and available from stock.

PRODUCT CODE EXAMPLE

IPMUHDTECFIX035BRSC

PRODUCT DESCRIPTION EXAMPLE

M3.5 Unheaded Tech-Fix Brass Inserts for Plastics Self Colour

*Non preferred. UNC & UNF thread sizes available to order. Contact our sales team to enquire for availability.

E. & O. E.

© 2021, Lancaster Fastener Co Ltd. All images are copyright protected.

t: +44 (0) 1524 389 232

f: +44 (0) 1524 66367

enquiries@lancasterfastener.co.uk

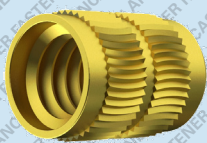
www.lancasterfastener.com



LANCASTER

HEAT-FIX

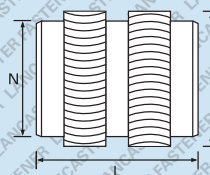
Brass Inserts for Plastics



Brass

Self Colour

RoHS 2 Compliant



Further technical data is available on page 264

Unheaded (UHDHEAFIX)

Thread	M2*	M2.5*	M3	M3.5	M4	M5	M6	M8*	Thread
W mm	3.5	4.4	4.4	5.2	6.1	6.9	8.5	10.0	W mm
N mm	3.1	3.9	3.9	4.7	5.5	6.3	7.9	9.5	N mm
Rec. Hole Size (mm) (-0.0/+0.1)	3.2	4.0	4.0	4.8	5.6	6.4	8.0	9.6	Rec. Hole Size (mm) (-0.0/+0.1)
Min. Wall Thickness (mm)	1.4	1.8	1.8	2.1	2.4	2.8	3.6	5.0	Min. Wall Thickness (mm)
L- Length mm	Bulk Carton Quantity Small Box Quantity Weight (KG) per 1,000								L- Length mm
3.9	N/A 1,000 0.16								3.9
5.8	N/A 1,000 0.28	25,000 1,000 0.34							5.8
7.1			25,000 1,000 0.60						7.1
8.1					10,000 1,000 0.99				8.1
9.5						10,000 1,000 1.25			9.5
12.7							2,500 1,000 2.87	N/A 1,000 3.60	12.7
-									-
-									-
-									-
-									-
-									-
-									-
-									-
-									-
-									-
-									-
-									-
-									-

Brass Self Colour - preferred and available from stock.

PRODUCT CODE EXAMPLE

IPMUHDHEAFIX050BRSC

PRODUCT DESCRIPTION EXAMPLE

M5 Unheaded Heat-Fix Brass Inserts for Plastics Self Colour

*Non preferred. UNC & UNF thread sizes available to order. Contact our sales team to enquire for availability.
E. & O. E.

© 2021, Lancaster Fastener Co Ltd. All images are copyright protected.

t: +44 (0) 1524 389 232

f: +44 (0) 1524 66367

enquiries@lancasterfastener.co.uk

www.lancasterfastener.com

Carbon Steel Product Ranges

Stainless Steel Product Ranges

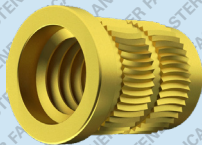
Brass Product Ranges

Technical Data



LANCASTER

Brass Inserts for Plastics

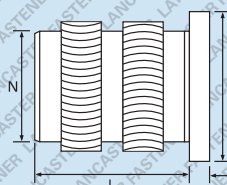


HEAT-FIX

Brass

Self Colour

RoHS 2 Compliant



Further technical data is available on page 264

Headed (HDHEAFIX)

Thread	M2*	M2.5*	M3	M3.5	M4	M5	M6	M8*	Thread
H mm	4.8	5.5	5.5	6.4	7.1	7.9	9.5	11.1	H mm
T mm	0.51	0.58	0.58	0.74	0.89	1.07	1.32	1.32	T mm
N mm	3.1	3.9	3.9	4.7	5.5	6.3	7.9	9.5	N mm
Rec. Hole Size (mm) (-0.0/+0.1)	3.2	4.0	4.0	4.8	5.6	6.4	8.0	9.6	Rec. Hole Size (mm) (-0.0/+0.1)
Min. Wall Thickness (mm)	1.4	1.8	1.8	2.1	2.4	2.8	3.6	5.0	Min. Wall Thickness (mm)
L- Length mm	Bulk Carton Quantity Small Box Quantity Weight (KG) per 1,000								L- Length mm
4.0	N/A 1,000 0.20								4.0
5.7		N/A 1,000 0.30	25,000 1,000 0.42						5.7
7.1									7.1
8.1					10,000 1,000 1.23				8.1
9.5						10,000 1,000 1.54			9.5
12.7							2,500 1,000 2.30	N/A 1,000 3.60	12.7
-									-
-									-
-									-
-									-
-									-
-									-
-									-
-									-
-									-
-									-
-									-

Brass Self Colour - preferred and available from stock.

PRODUCT CODE EXAMPLE

IPM-HDHEAFIX030BRSC

PRODUCT DESCRIPTION EXAMPLE

M3 Headed Heat-Fix Brass Inserts for Plastics Self Colour

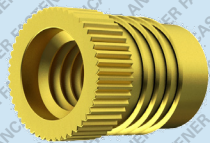
*Non preferred. UNC & UNF thread sizes available to order. Contact our sales team to enquire for availability.

E. & O. E.

© 2021, Lancaster Fastener Co Ltd. All images are copyright protected.

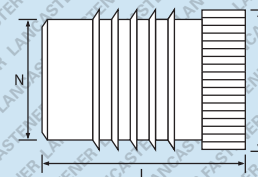


Brass Inserts for Plastics



Self Colour

RoHS 2 Compliant



Further technical data is available on page 264

Unheaded (UHDFINFIX)

Brass Self Colour - preferred and available from stock.

PRODUCT CODE EXAMPLE	PRODUCT DESCRIPTION EXAMPLE
IPMUHDFINFIX060BRSC	M6 Unheaded Fin-Fix Brass Inserts for Plastics Self Colour

*Non preferred. UNC & UNF thread sizes available to order. Contact our sales team to enquire for availability.
E. & O. E.

© 2021, Lancaster Fastener Co Ltd. All images are copyright protected.



LANCASTER

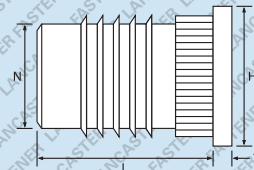
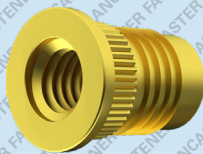
FIN-FIX

Brass Inserts for Plastics

Brass

Self Colour

RoHS 2 Compliant



Further technical data is available on page 264

Headed (HDFINFIX)

Thread	M2*	M2.5*	M3	M3.5	M4	M5	M6	M8*	Thread
H mm	4.8	5.5	5.5	6.4	7.1	7.9	9.5	11.0	H mm
T mm	0.45	0.58	0.58	0.74	0.89	1.07	1.32	1.32	T mm
N mm	3.1	3.9	3.9	4.7	5.5	6.3	7.9	9.5	N mm
Rec. Hole Size (mm) (-0.0/+0.1)	3.2	4.0	4.0	4.8	5.6	6.4	8.0	9.6	Rec. Hole Size (mm) (-0.0/+0.1)
Min. Wall Thickness (mm)	1.6	2.0	2.0	2.4	2.8	3.2	4.0	4.8	Min. Wall Thickness (mm)
L- Length mm	Bulk Carton Quantity Small Box Quantity Weight (KG) per 1,000								L- Length mm
4.0	N/A 1,000 0.20								4.0
4.8		N/A 1,000 0.40	25,000 1,000 0.60						4.8
6.4				25,000 1,000 0.80					6.4
7.9					10,000 1,000 1.17				7.9
9.5						10,000 1,000 1.50			9.5
12.7							2,500 1,000 3.00	N/A 500 4.80	12.7
-									-
-									-
-									-
-									-
-									-
-									-
-									-
-									-
-									-
-									-
-									-
-									-

Brass Self Colour - preferred and available from stock.

PRODUCT CODE EXAMPLE

IPM-HDFINFIX050BRSC

PRODUCT DESCRIPTION EXAMPLE

M5 Headed Fin-Fix Brass Inserts for Plastics Self Colour

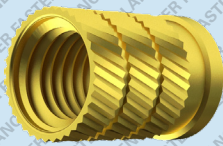
*Non preferred. UNC & UNF thread sizes available to order. Contact our sales team to enquire for availability.

E. & O. E.

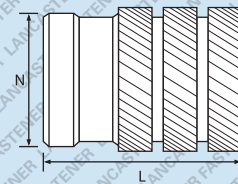
© 2021, Lancaster Fastener Co Ltd. All images are copyright protected.



Brass Inserts for Plastics



RoHS 2 Compliant



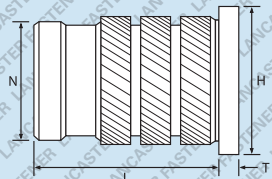
Unheaded (UHDBROFIX)

Brass Self Colour - preferred and available from stock.

PRODUCT CODE EXAMPLE	PRODUCT DESCRIPTION EXAMPLE
IPMUHDBROFIX060BRSC	M6 Unheaded Broach-Fix Brass Inserts for Plastics Self Colour

*Non preferred. UNC & UNF thread sizes available to order. Contact our sales team to enquire for availability.
E. & O. E.
© 2021, Lancaster Fastener Co Ltd. All images are copyright protected.

Brass Inserts for Plastics



Further technical data is available on page 265

Headed (HDBROFIX)

[illegible]

Brass Self Colour - preferred and available from stock.

PRODUCT CODE EXAMPLE	PRODUCT DESCRIPTION EXAMPLE
IPM-HDBROFIX040BRSC	M4 Headed Broach-Fix Brass Inserts for Plastics Self Colour

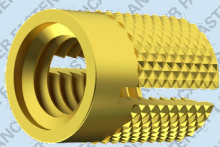
*Non preferred. UNC & UNF thread sizes available to order. Contact our sales team to enquire for availability.

E. & O. E.

© 2021, Lancaster Fastener Co Ltd. All images are copyright protected.

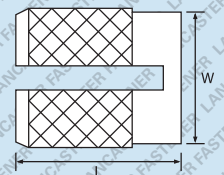


Brass Inserts for Plastics



Self Colour

RoHS 2 Compliant



Further technical data is available on page 265

[illegible]

Brass Self Colour - preferred and available from stock.

PRODUCT DESCRIPTION EXAMPLE

M3.5 Unheaded Expansion-Fix Brass Inserts for Plastics Self Colour

*Non preferred. UNC & UNF thread sizes available to order. Contact our sales team to enquire for availability.

© 2021, Lancaster Fastener Co Ltd. All images are copyright protected.



LANCASTER

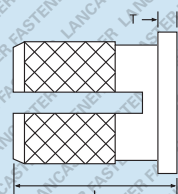
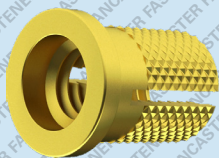
EXPANSION-FIX

Brass Inserts for Plastics

Brass

Self Colour

RoHS 2 Compliant



Further technical data is available on page 265

Headed (HDEXPFIX)

Thread	M2*	M2.5*	M3	M3.5	M4	M5	M6	M8*	Thread
H mm	4.8	5.5	5.5	6.4	7.1	7.9	9.5	11.1	H mm
T mm	0.43	0.51	0.51	0.66	0.82	0.99	1.25	1.25	T mm
Rec. Hole Size (mm) (-0.0/+0.1)	3.2	4.0	4.0	4.8	5.6	6.4	8.0	9.6	Rec. Hole Size (mm) (-0.0/+0.1)
Min. Wall Thickness (mm)	2.4	3.2	3.2	3.6	4.0	4.8	6.0	7.0	Min. Wall Thickness (mm)
L- Length mm	Bulk Carton Quantity Small Box Quantity Weight (KG) per 1,000								L- Length mm
3.9	N/A 1,000 0.20								3.9
4.7		N/A 1,000 0.40	25,000 1,000 0.60						4.7
6.3									6.3
7.9						10,000 1,000 1.10			7.9
9.4							10,000 1,000 1.25		9.4
12.6							2,500 1,000 2.40	N/A 500 5.40	12.6
-									-
-									-
-									-
-									-
-									-
-									-
-									-
-									-
-									-
-									-
-									-
-									-

Brass Self Colour - preferred and available from stock.

PRODUCT CODE EXAMPLE

IPM-HDEXPFIX050BRSC

PRODUCT DESCRIPTION EXAMPLE

M5 Headed Expansion-Fix Brass Inserts for Plastics Self Colour

*Non preferred. UNC & UNF thread sizes available to order. Contact our sales team to enquire for availability.

E. & O. E.

© 2021, Lancaster Fastener Co Ltd. All images are copyright protected.

t: +44 (0) 1524 389 232

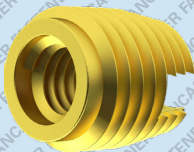
f: +44 (0) 1524 66367

enquiries@lancasterfastener.co.uk

www.lancasterfastener.com

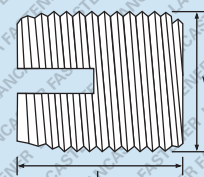


Brass Inserts for Plastics



Self Colour

RoHS 2 Compliant



Further technical data is available on page 266

[illegible]

Brass Self Colour - preferred and available from stock.

PRODUCT DESCRIPTION EXAMPLE

M4 Unheaded Thread-Fix Brass Inserts for Plastics Self Colour

*Non-preferred. UNC & UNF thread sizes available to order. Contact our sales team to enquire for availability.
E. & O. E.

© 2021, Lancaster Fastener Co Ltd. All images are copyright protected.



LANCASTER

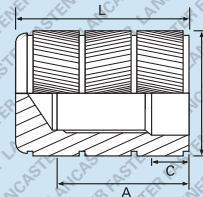
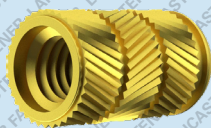
FLOW-FIX

Brass

Self Colour

RoHS 2 Compliant

Brass Inserts for Plastics



Further technical data is available on page 266

Unheaded (UHDFLOFIX)

Thread	M2*	M2.5*	M3	M3.5	M4	M5	M6	M8*	M10*	Thread
W mm	3.4	4.3	4.7	5.5	6.3	7.3	9.8	11.4	13.8	W mm
A min mm	3.6	4.0	4.6	6.0	6.7	7.4	8.1	11.1	11.9	A min mm
C mm	1.0	1.2	1.3	1.6	1.8	2.0	2.0	2.3	2.4	C mm
L- Length mm	<div>Bulk Carton Quantity Small Box Quantity Weight (KG) per 1,000</div>									L- Length mm
5.5	N/A 1,000 0.19									5.5
6.4	N/A 1,000 0.24									6.4
7.3			25,000 1,000 0.45							7.3
9.2										9.2
10.2					10,000 1,000 1.39					10.2
11.2							10,000 1,000 2.08			11.2
14.4							2,500 500 5.26			14.4
16.5							N/A 500 7.60			16.5
17.9									N/A 500 8.70	17.9
-										-
-										-
-										-
-										-
-										-
-										-
-										-
-										-

Brass Self Colour - preferred and available from stock.

PRODUCT CODE EXAMPLE

IPMUHDFLOFIX060BRSC

PRODUCT DESCRIPTION EXAMPLE

M6 Unheaded Flow-Fix Brass Inserts for Plastics Self Colour

*Non preferred. UNC & UNF thread sizes available to order. Contact our sales team to enquire for availability.

E. & O. E.

© 2021, Lancaster Fastener Co Ltd. All images are copyright protected.

t: +44 (0) 1524 389 232

f: +44 (0) 1524 66367

enquiries@lancasterfastener.co.uk

www.lancasterfastener.com