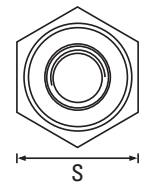
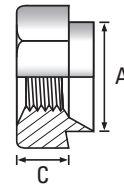
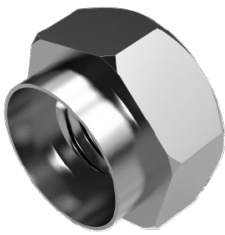


Hexagon

A1 / A2 Stainless Steel\*



Thread	M2.5	M3	M3.5	M4	M5	M6	M8	M10	M12	Thread
A Dia. of spigot +0.00 -0.13	5.54	5.54	6.73	6.73	7.92	9.52	12.70	15.87	19.05	A Dia. of spigot +0.00 -0.13
S Width A/F ±0.15	7.92	7.92	7.92	7.92	9.52	11.10	14.27	19.05	22.22	S Width A/F ±0.15
C Depth of body ±0.13	3.17	3.17	3.17	3.17	3.81	5.08	6.35	7.62	10.16	C Depth of body ±0.13
Recom. Hole Size +0.05 -0.00	5.54	5.54	6.73	6.73	7.92	9.52	12.70	15.87	19.05	Recom. Hole Size +0.05 -0.00



Scan the QR Code to view technical drawings for this product range  
<https://www.lancasterfastener.com/drawings-for-hchrba2>

GAUGE										GAUGE
10 swg							●	●	●	10 swg
12 swg				●		●	●			12 swg
14 swg		●		●	●	●	●			14 swg
16 swg		●		●	●	●	●			16 swg
18 swg		●		●	●	●				18 swg
20 swg		●			●	●				20 swg
-										-
-										-
-										-
-										-

● A1 / A2 Stainless Steel - preferred and available from stock.

\*Grade depends on the method of manufacturer.

PRODUCT CODE EXAMPLE  
HCHR04018A2

PRODUCT DESCRIPTION EXAMPLE  
M4 x 18 swg Hexagon Rivet Bush A2 Stainless Steel

Screws for Plastics  
 ISO & DIN 7500 Tap-Fix® Screws  
 Machine Screws  
 Self-Tapping Screws  
 Self-Drilling Screws  
 Micro Diameter Screws  
 Hammer Drive Screws  
 K-Series® Setzmuttern  
 Rivet Bushes  
 Self-Clinching Fasteners  
 CD Weld Studs  
 Brass Inserts for Plastics