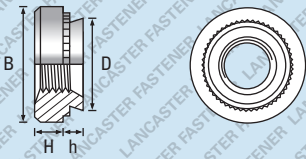


Steel / Zinc Plated (CR3)

RoHS 2 Compliant

## Self-Clinching Fasteners



Also available in A1 / A2 Stainless Steel - See page 209

Further technical data is available on page 258

Thread	M2.5			M3			M3 Alt			M3.5			M4			M5			M6			M8		M10		Thread
	-0	-1	-2	-0	-1	-2	-0	-1	-2	-0	-1	-2	-0	-1	-2	-0	-1	-2	-0	-1	-2	-1	-2	-1	-2	
h Max	0.77	0.97	1.38	0.76	0.97	1.37	0.76	0.97	1.37	0.76	0.97	1.37	0.76	0.97	1.37	0.76	0.97	1.37	0.97	1.37	2.21	1.37	2.21	2.21	3.05	h Max
Min. Rec. sheet thickness	0.8	1.0	1.4	0.8	1.0	1.4	0.8	1.0	1.4	0.8	1.0	1.4	0.8	1.0	1.4	0.8	1.0	1.4	1.0	1.4	2.3	1.4	2.3	2.31	3.18	Min. Rec. sheet thickness
D Max	4.22			4.22			4.73			4.73			5.38			6.38			8.72			10.44		13.97		D Max
B ±0.25	6.3			6.3			7.1			7.1			7.9			8.7			11.05			12.65		17.35		B ±0.25
H ±0.25	1.5			1.5			1.5			1.5			2.0			2.0			4.10			5.50		7.48		H ±0.25
Hole Size +0.08 -0.00	4.25			4.25			4.75			4.75			5.4			6.4			8.75			10.50		14.0		Hole Size +0.08 -0.00
Min. distance to sheet edge	4.8			4.8			5.6			5.6			6.9			7.1			8.6			9.7		13.5		Min. distance to sheet edge

CODE	Bulk Carton Quantity						Small Box Quantity						Weight (KG) per 1,000						CODE						
	-0	-1	-2	-3	-0	-1	-0	-1	-2	-3	-0	-1	-2	-3	-0	-1	-2	-3							
-0	40,000	1,000	0.38	40,000	1,000	0.35	20,000	1,000	0.67	20,000	1,000	0.73	6,000	1,000	2.54	-0									
-1	40,000	1,000	0.40	40,000	1,000	0.37	30,000	1,000	0.37*	20,000	1,000	0.68	20,000	1,000	0.77	6,000	1,000	2.62	4,000	500	3.98	1,000	100	11.08	-1
-2	40,000	1,000	0.41	40,000	1,000	0.38	30,000	1,000	0.38*	20,000	1,000	0.71	20,000	1,000	0.80	6,000	500	2.70	4,000	500	4.24	1,000	100	11.52	-2
-3																									-3

Zinc Plated (CR3) - preferred and available from stock.

PRODUCT CODE EXAMPLE HCN04-1STZC	PRODUCT DESCRIPTION EXAMPLE M4 x -1 Clinch Nut Steel / Zinc Plated (CR3)
-------------------------------------	---

\*Non preferred size and may be subject to minimum manufacturing quantities.  
E. & O. E.  
© 2021, Lancaster Fastener Co Ltd. All images are copyright protected.

Note: When ordering M3 Alternative, please ensure your order clearly states "M3 Alt".

Carbon Steel Product Ranges  
Stainless Steel Product Ranges  
Brass Product Ranges  
Technical Data



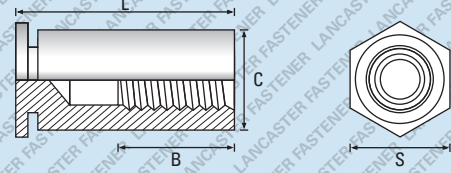
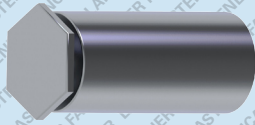
LANCASTER

BLIND STAND OFFS

Steel / Zinc Plated (CR3)

RoHS 2 Compliant

Self-Clinching Fasteners



Also available in A1 Stainless Steel - See page 211

Further technical data is available on page 259

Table with columns for Thread (M3, M3 ALT, M4, M5), C, S, Hole Size, Min. distance to sheet edge, Min. Rec. sheet thickness, B Dimension (nom), Bulk Carton Quantity, Small Box Quantity, Weight (KG) per 1,000, and LENGTH ±0.2.

Zinc Plated (CR3) - preferred and available from stock.

PRODUCT CODE EXAMPLE

HCBS003010STZC

PRODUCT DESCRIPTION EXAMPLE

M3 x 10 Clinch Blind Stand Off Steel / Zinc Plated (CR3)

E. & O. E. © 2021, Lancaster Fastener Co Ltd. All images are copyright protected.

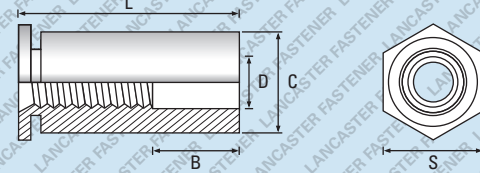
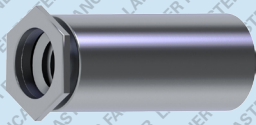
Note: When ordering M3 Alternative, please ensure your order clearly states "M3 Alt".



Steel / Zinc Plated (CR3)

RoHS 2 Compliant

# Self-Clinching Fasteners



Also available in A1 Stainless Steel - See page 212

Further technical data is available on page 260

Thread	M2.5	M3	M3 ALT	M4	M5	Thread
C +0.00 -0.13	4.18	4.18	5.39	7.10	7.10	C +0.00 -0.13
D	3.2	3.2	3.2	4.8	5.2	D
S Width A/F Nom	4.8	4.8	6.4	7.9	7.9	S Width A/F Nom
Hole Size +0.08 -0.00	4.2	4.2	5.4	7.2	7.2	Hole Size +0.08 -0.00
Min. distance to sheet edge	6	6	6.8	8	8	Min. distance to sheet edge
Min. Rec. sheet thickness	1.0	1.0	1.0	1.3	1.3	Min. Rec. sheet thickness
B Dimension (nom)	Bulk Carton Quantity   Small Box Quantity   Weight (KG) per 1,000					LENGTH ±0.2
N/A	40,000   1,000   0.17		20,000   1,000   0.62		3	
	30,000   1,000   0.23		20,000   1,000   0.68		4	
	40,000   1,000   0.35*		25,000   1,000   0.63		5	
	40,000   1,000   0.43*		15,000   1,000   0.76		6	
	30,000   1,000   0.85		8,000   1,000   1.35		8	
4	20,000   1,000   0.96		8,000   1,000   1.51		10	
	20,000   1,000   1.00		6,000   1,000   1.84		12	
	15,000   1,000   1.10		5,000   1,000   2.20		14	
8	8,000   1,000   1.90		5,000   1,000   2.60		16	
			3,000   500   3.41		18	
			3,000   500   3.81		20	
11			3,000   500   4.18		22	
			2,000   500   4.55		25	

Zinc Plated (CR3) - preferred and available from stock.

PRODUCT CODE EXAMPLE

HCS004006STZC

PRODUCT DESCRIPTION EXAMPLE

M4 x 6 Clinch Through Stand Off Steel / Zinc Plated (CR3)

\*Non preferred size and may be subject to minimum manufacturing quantities. E. & O. E.

© 2021, Lancaster Fastener Co Ltd. All images are copyright protected.

Note: When ordering M3 Alternative, please ensure your order clearly states "M3 Alt".



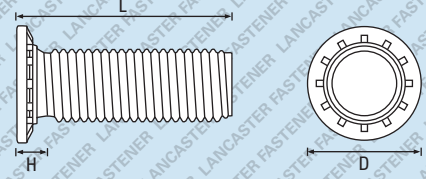
LANCASTER

STUDS

Steel / Zinc Plated (CR3)

# Self-Clinching Fasteners

RoHS 2 Compliant



Also available in A2 Stainless Steel - See page 213

Further technical data is available on page 260

## FLUSH HEAD

Thread	M2.5	M3	M4	M5	M6	M8	Thread
D ±0.4	4.1	4.6	5.9	6.5	8.2	9.6	D ±0.4
H Max	1.95	2.1	2.4	2.7	3.0	3.7	H Max
Hole Size +0.08 -0.00	2.5	3.0	4.0	5.0	6.0	8.0	Hole Size +0.08 -0.00
Min. distance to sheet edge	5.4	5.6	7.2	7.2	7.9	9.0	Min. distance to sheet edge
Min. Rec. sheet thickness	1.0	1.0	1.0	1.0	1.6	2.4	Min. Rec. sheet thickness
LENGTH ±0.2	Bulk Carton Quantity   Small Box Quantity   Weight (KG) per 1,000						LENGTH ±0.2
6	40,000   1,000   0.22	40,000   1,000   0.32	20,000   1,000   0.53				6
8	40,000   1,000   0.28	40,000   1,000   0.38	20,000   1,000   0.70	15,000   1,000   1.00			8
10	25,000   1,000   0.49	30,000   1,000   0.47	20,000   1,000   0.83	12,000   1,000   1.28	10,000   1,000   1.84		10
12	25,000   1,000   0.51	25,000   1,000   0.56	15,000   1,000   0.96	10,000   1,000   1.49	8,000   1,000   2.20	3,000   500   4.45	12
15	25,000   1,000   0.54	20,000   1,000   0.66	15,000   1,000   1.22	10,000   1,000   1.85	6,000   1,000   2.72	3,000   500   4.83	15
16		20,000   1,000   0.72	15,000   1,000   1.27	8,000   1,000   1.90	6,000   1,000   2.84	3,000   500   5.17	16
18	20,000   1,000   0.59	20,000   1,000   0.82	15,000   1,000   1.39	8,000   1,000   2.05	5,000   500   3.23	3,000   500   5.74	18
20		15,000   1,000   0.88	10,000   1,000   1.55	6,000   1,000   2.45	5,000   500   3.63	2,000   500   6.33	20
22		15,000   1,000   0.98					22
25		10,000   1,000   1.08	5,000   1,000   1.91	5,000   1,000   3.16	4,000   500   4.36	2,000   250   7.97	25
30		7,000   1,000   1.30	5,000   1,000   2.27	4,000   500   3.65	3,000   500   5.16	2,000   250   9.48	30
35		5,000   500   1.49	5,000   1,000   2.63		3,000   500   6.01	2,000   250   10.87	35
38					3,000   500   6.54	2,000   250   11.76	38
40						2,000   100   12.27	40

Zinc Plated (CR3) - preferred and available from stock.

PRODUCT CODE EXAMPLE

HCS03010STZC

PRODUCT DESCRIPTION EXAMPLE

M3 x 10 Flush Head Clinch Stud Steel / Zinc Plated (CR3)

E. & O. E.

© 2021, Lancaster Fastener Co Ltd. All images are copyright protected.

Carbon Steel Product Ranges

Stainless Steel Product Ranges

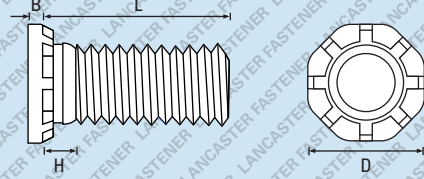
Brass Product Ranges

Technical Data

Steel / Zinc Plated (CR3)

RoHS 2 Compliant

## Self-Clinching Fasteners



### NON FLUSH HEAD

Further technical data is available on page 260

Thread	-	M8	M10	-	Thread
D ±0.4	-	12.5	15.7	-	D ±0.4
H Max	-	3.5	4.1	-	H Max
B Max	-	1.78	2.30	-	B Max
Hole Size +0.13 -0.00	-	8	10	-	Hole Size +0.13 -0.00
Min. distance to sheet edge	-	12.7	13.7	-	Min. distance to sheet edge
Min. Rec. sheet thickness	-	2	2.4	-	Min. Rec. sheet thickness
LENGTH ±0.2	Bulk Carton Quantity   Small Box Quantity   Weight (KG) per 1,000			LENGTH ±0.2	
10				10	
12				12	
15				15	
16				16	
20	2,000   500   6.35		N/A   100   13.60	20	
25	2,000   250   7.97		N/A   100   15.75	25	
30	2,000   250   9.86		N/A   100   18.25	30	
35	2,000   250   10.87		N/A   100   20.74	35	
40				40	
45				45	
50				50	
-				-	

Zinc Plated (CR3) - preferred and available from stock.

PRODUCT CODE EXAMPLE	PRODUCT DESCRIPTION EXAMPLE
HCS99020STZC-HS	M10 x 20 Non Flush Head High Strength Clinch Stud Steel / Zinc Plated (CR3)

\*Non preferred size. Minimum order quantity of 5,000 pieces.  
E. & O. E.  
© 2021, Lancaster Fastener Co Ltd. All images are copyright protected.