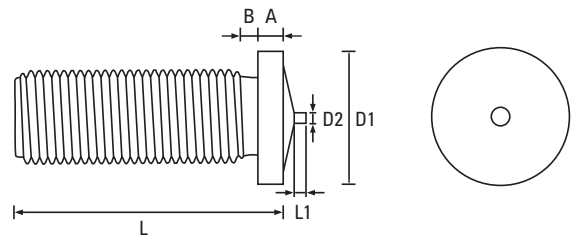


# CD Weld Studs

Fasteners for Sheet Metal Applications

Threaded Type PT DIN EN ISO 13918

Copper Coated



Thread	M3	M4	M5	M6	M8	Thread
D1 ±0.2	4.5	5.5	6.5	7.5	9.0	D1 ±0.2
A	0.7 - 1.4	0.7 - 1.4	0.8 - 1.4	0.8 - 1.4	0.8 - 1.4	A
B max	1.5	1.5	2.0	2.0	3.0	B max
D2 ±0.8	0.60	0.65	0.75	0.75	0.75	D2 ±0.8
L1 ±0.5	0.55	0.55	0.80	0.80	0.85	L1 ±0.5



Scan the QR Code to view technical drawings for this product range  
<https://www.lancasterfastener.com/drawings-cdwsptcu>

L - Length mm						L - Length mm
6	●	●				6
8	●	●	●	●		8
10	●	●	●	●	●	10
12	●	●	●	●	●	12
15	●	●	●	●	●	15
16	●	●	●	●	●	16
20	●	●	●	●	●	20
25	●	●	●	●	●	25
30	●	●	●	●	●	30
35		●	●	●	●	35
40		●	●	●	●	40
45			●	●	●	45
50			●	●	●	50
55					●	55
60					●	60

● Copper Coated - preferred and available from stock.

PRODUCT CODE EXAMPLE  
CDWSPT50016CU

PRODUCT DESCRIPTION EXAMPLE  
M5 x 16 DIN EN ISO 13918 Threaded Type PT CD Weld Stud Copper Coated