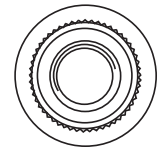
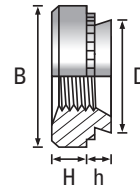


Nuts

A1 / A2 Stainless Steel\*



Thread	M2.5			M3			M3 Alt			M3.5			M4			M5			M6			M8		M10		Thread
	-0	-1	-2	-0	-1	-2	-0	-1	-2	-0	-1	-2	-0	-1	-2	-0	-1	-2	-0	-1	-2	-1	-2	-1	-2	
h <sub>max</sub>	0.77	0.97	1.38	0.76	0.97	1.37	0.76	0.97	1.37	0.76	0.97	1.37	0.76	0.97	1.37	0.76	0.97	1.37	0.97	1.37	2.21	1.37	2.21	2.21	3.05	h <sub>max</sub>
Min. Rec. sheet thickness	0.8	1.0	1.4	0.8	1.0	1.4	0.8	1.0	1.4	0.8	1.0	1.4	0.8	1.0	1.4	0.8	1.0	1.4	1.0	1.4	2.3	1.4	2.3	2.31	3.18	Min. Rec. sheet thickness
D <sub>Max</sub>	4.22			4.22			4.73			4.73			5.38			6.38			8.72			10.44		13.97		D <sub>Max</sub>
B <sub>±0.25</sub>	6.30			6.30			7.10			7.10			7.90			8.70			11.05			12.65		17.35		B <sub>±0.25</sub>
H <sub>±0.25</sub>	1.50			1.50			1.50			1.50			2.00			2.00			4.10			5.50		7.48		H <sub>±0.25</sub>
Hole Size +0.08 -0.00	4.25			4.25			4.75			4.75			5.40			6.40			8.75			10.50		14.00		Hole Size +0.08 -0.00
Min. distance to sheet edge	4.80			4.80			5.60			5.60			6.90			7.10			8.60			9.70		13.50		Min. distance to sheet edge



Scan the QR Code to view technical drawings for this product range  
<https://www.lancasterfastener.com/drawings-for-hcna2>

CODE																									CODE			
-0																											-0	
-1				●										●						●						●		-1
-2					●										●						●					●		-2
-3																												-3
-																												-

● A1 / A2 Stainless Steel - preferred and available from stock.

\*Grade depends on the method of manufacturer.

PRODUCT CODE EXAMPLE  
HCN06-2SS

PRODUCT DESCRIPTION EXAMPLE  
M6 x -2 Clinch Nut A2 Stainless Steel

Screws for Plastics  
 ISO & DIN 7500 Tap-Fix® Screws  
 Machine Screws  
 Self-Tapping Screws  
 Self-Drilling Screws  
 Micro Diameter Screws  
 Hammer Drive Screws  
 K-Series® Setzmuttern  
 Rivet Bushes  
 Self-Clinching Fasteners  
 CD Weld Studs  
 Brass Inserts for Plastics